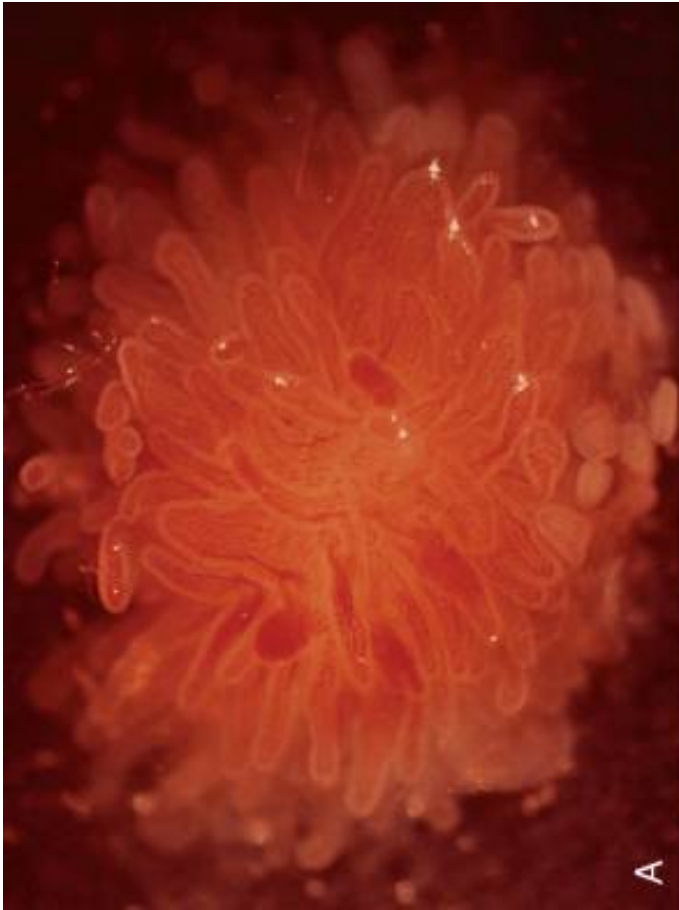


MVZ DÜREN
Histologie • Zytologie
Molekulare Diagnostik

Histologie Zöliakie



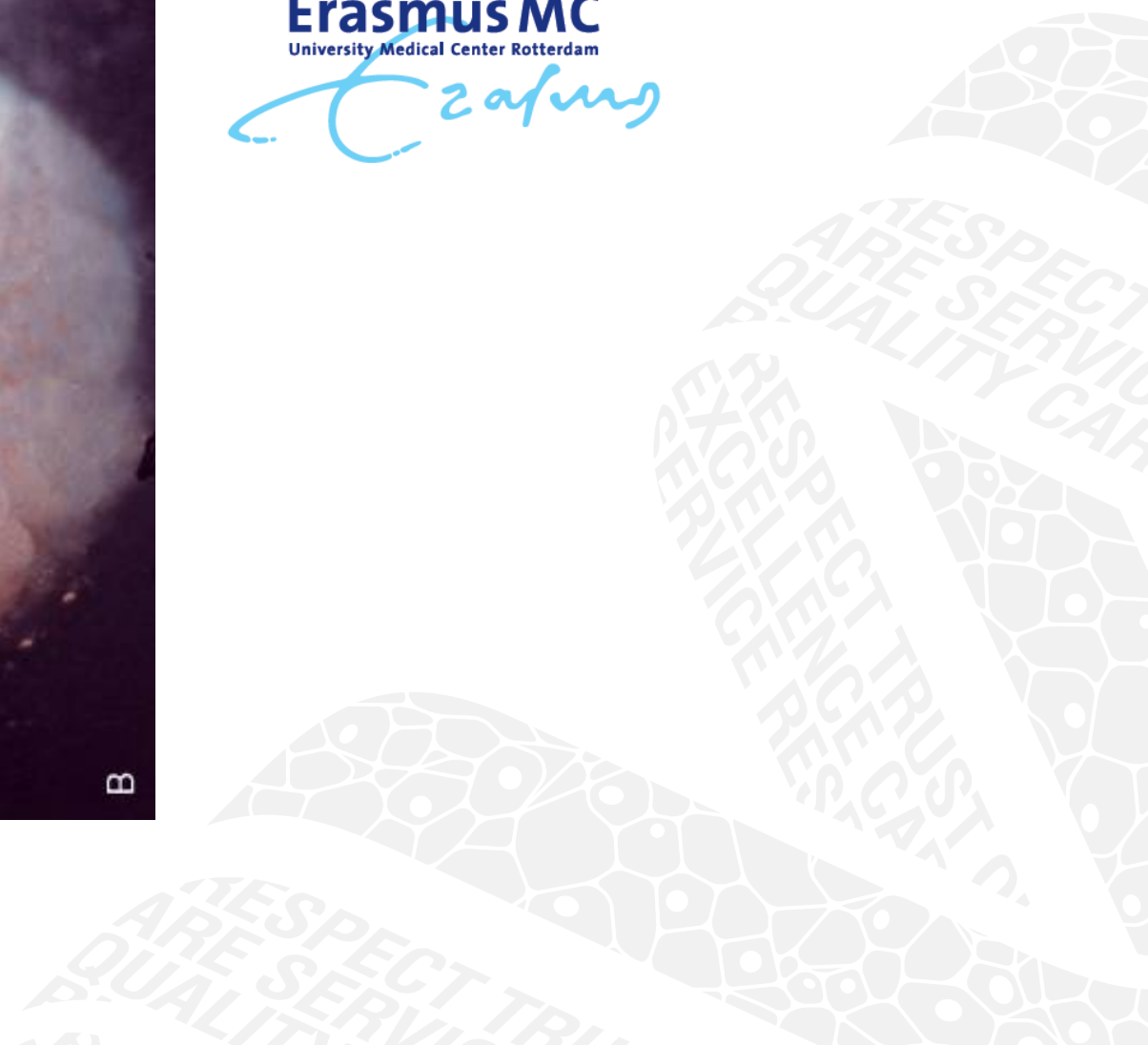
Celiac disease: histological assessment



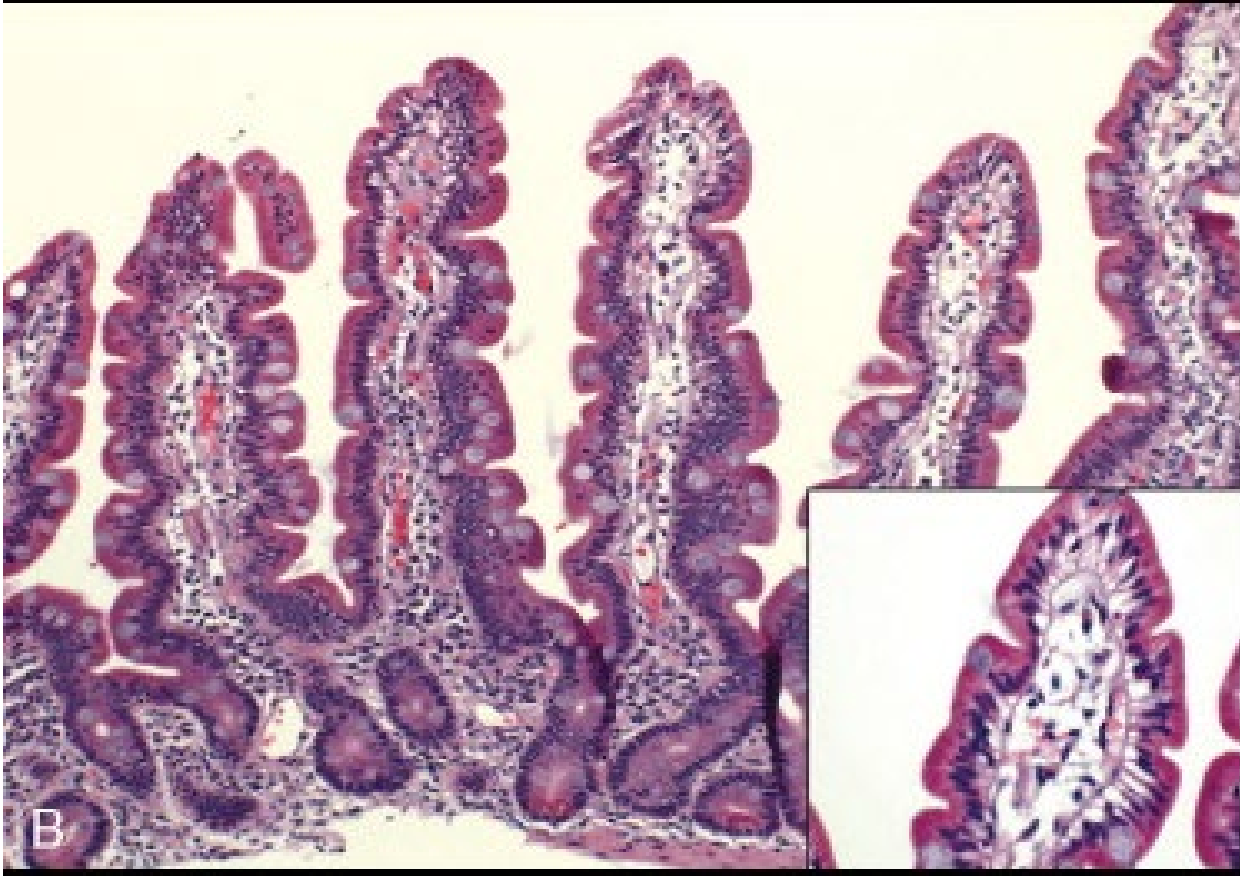
A



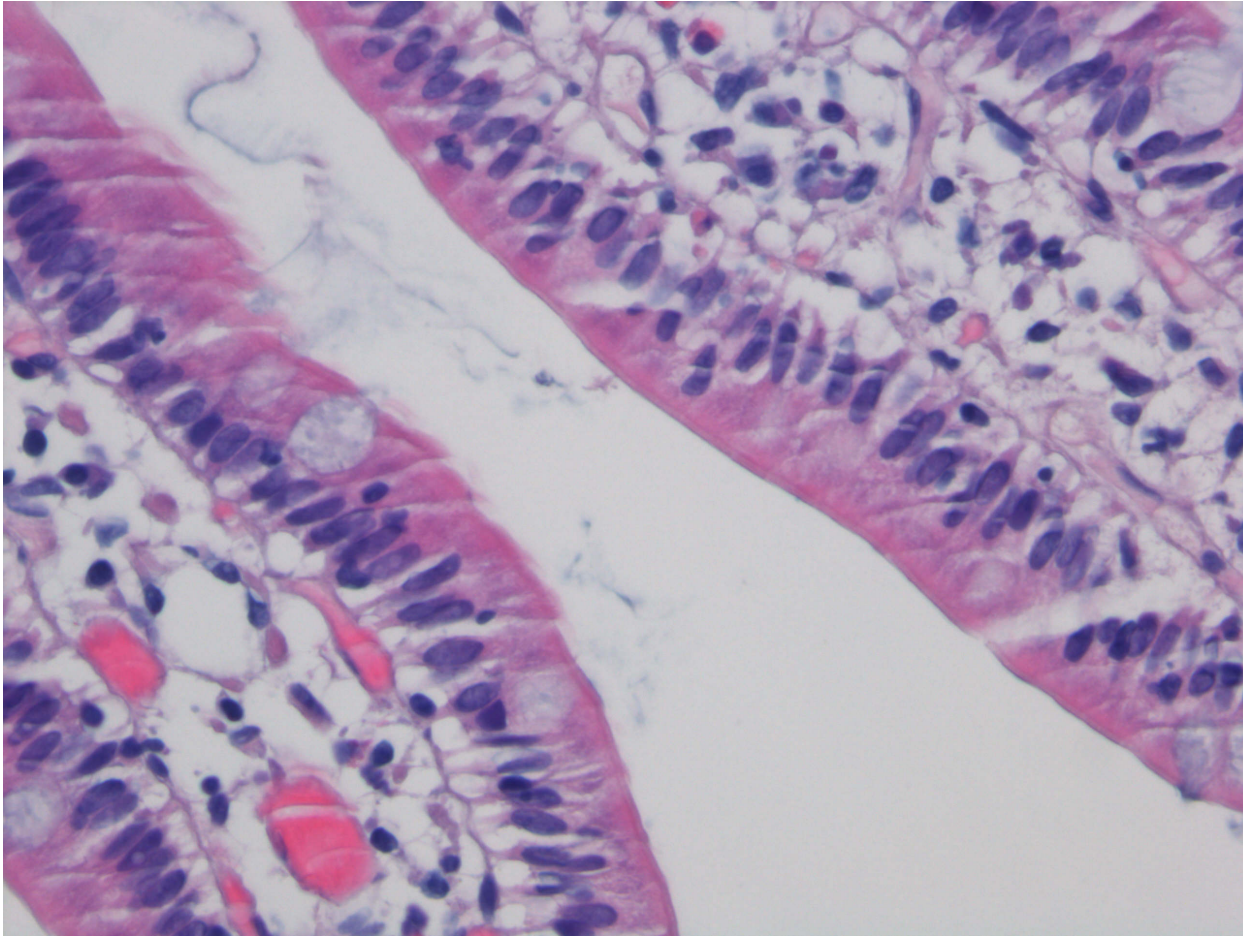
B

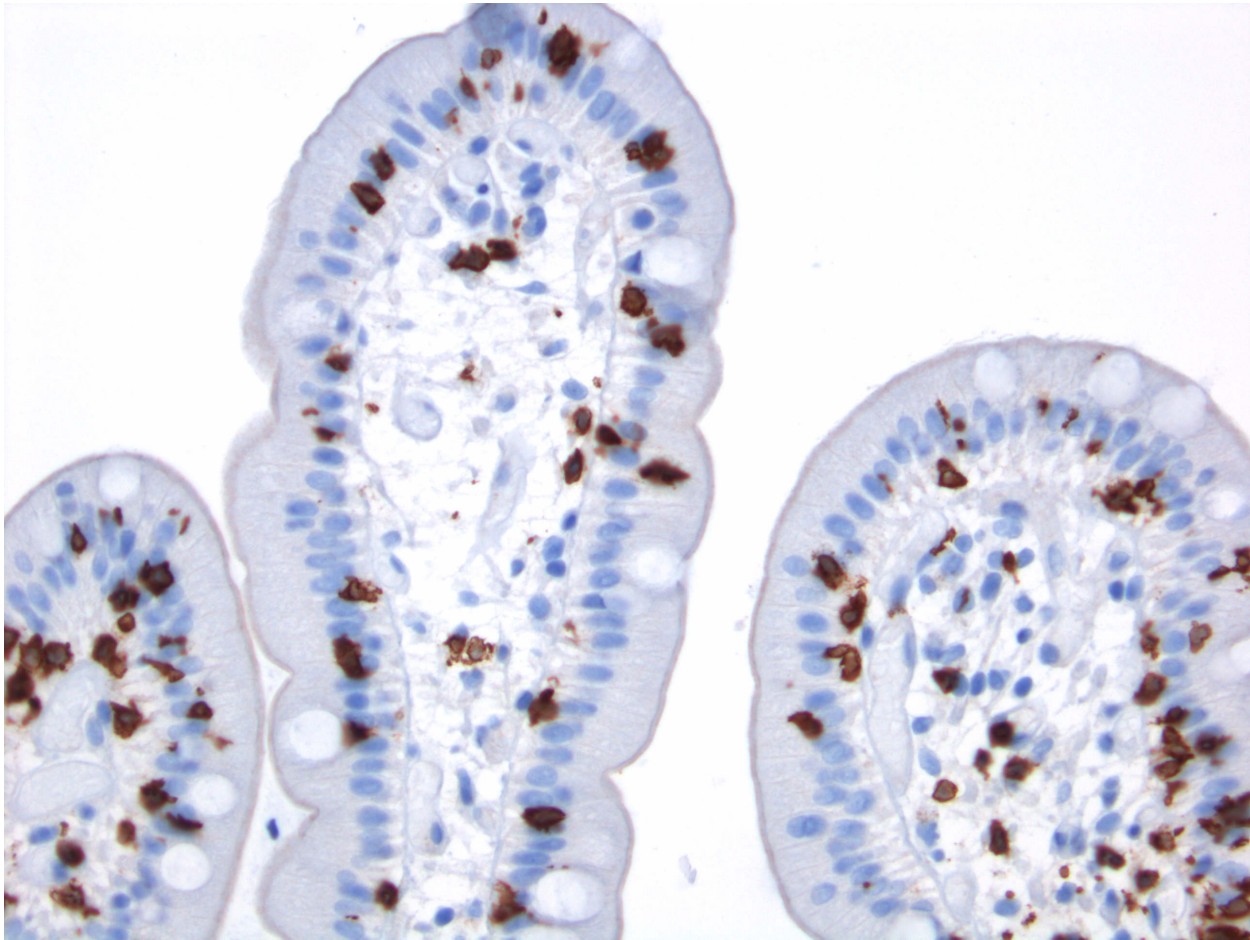


Normal duodenum: villus to crypt ration (3-5:1)



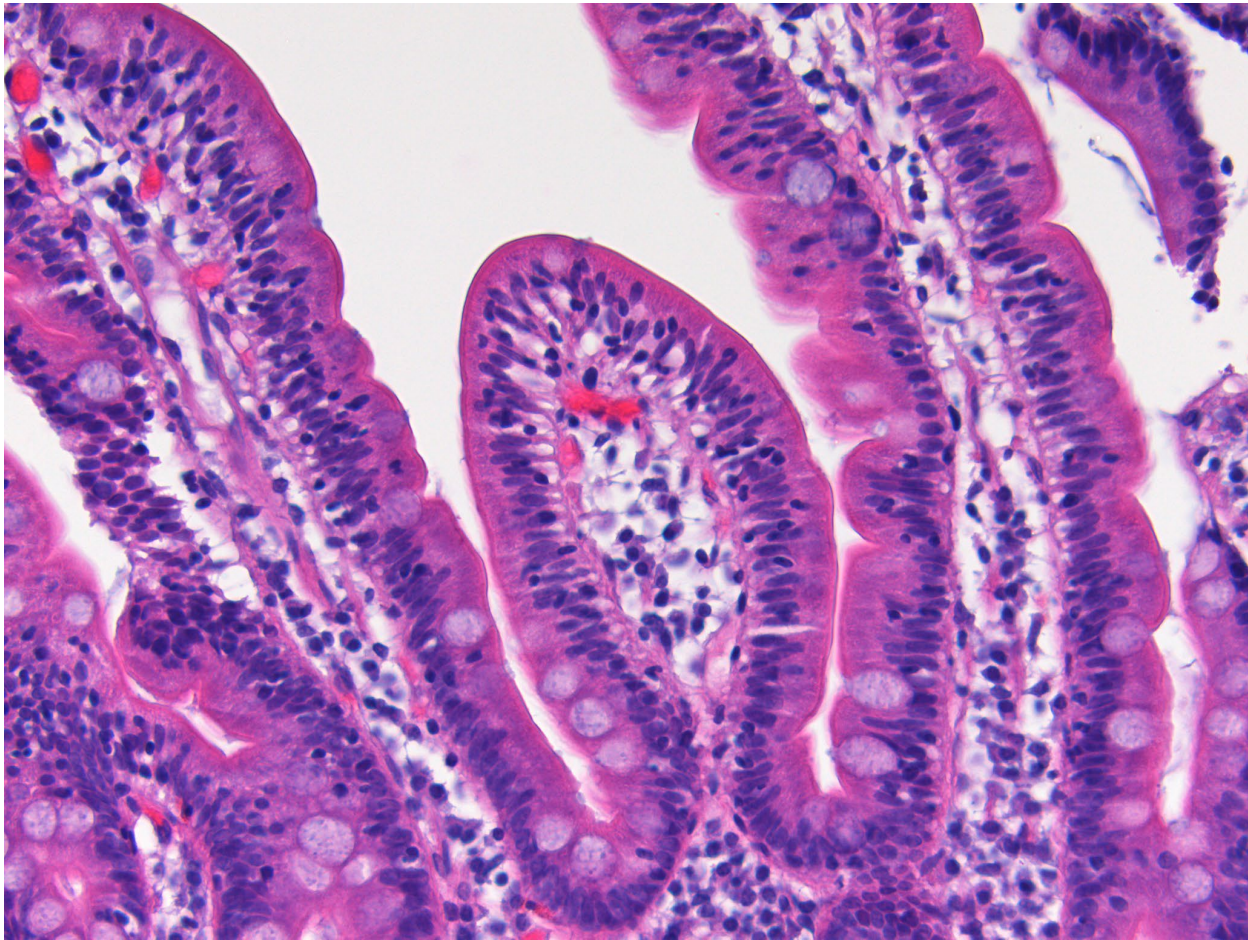
Normal duodenum: occasional intraepithelial lymphocytes

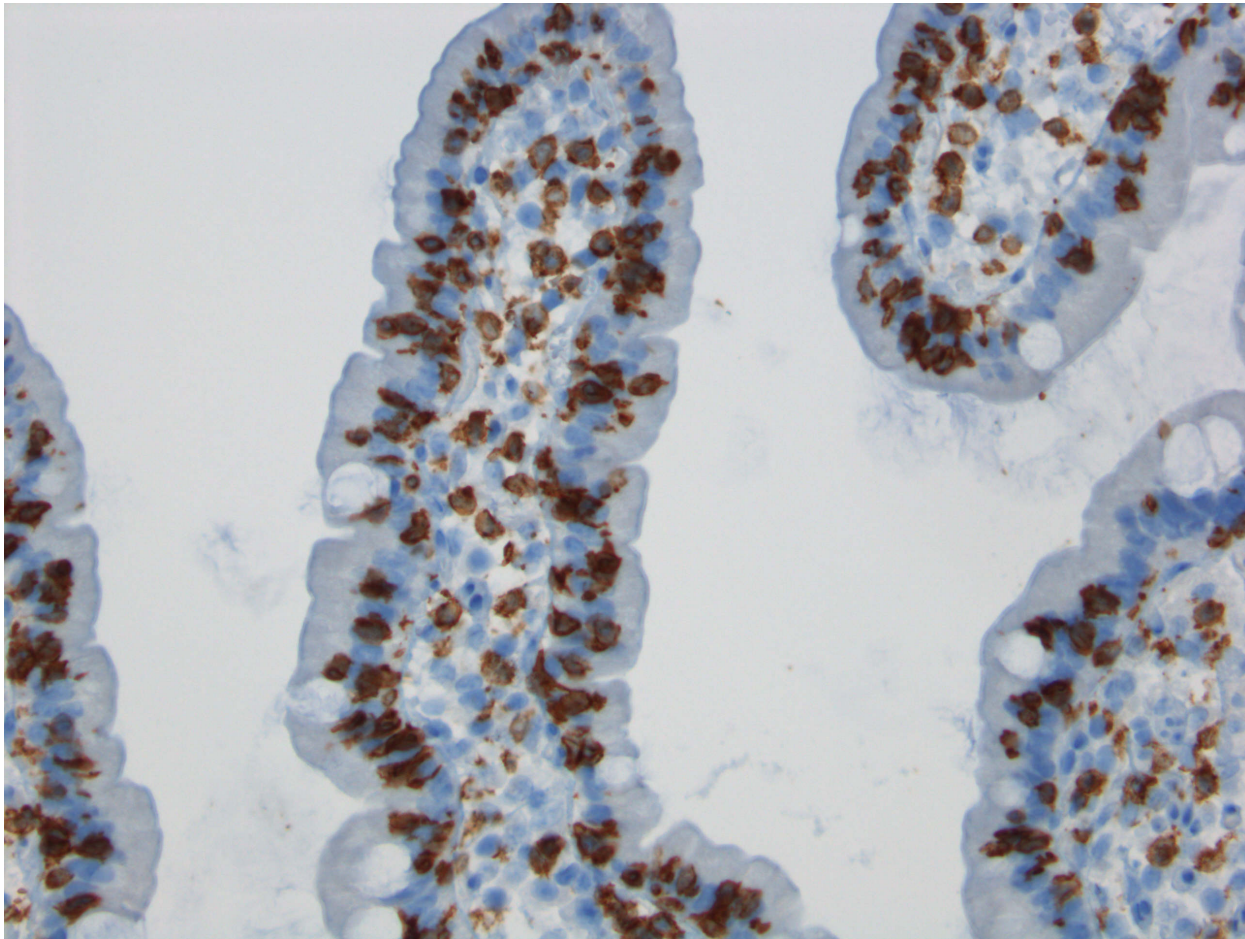


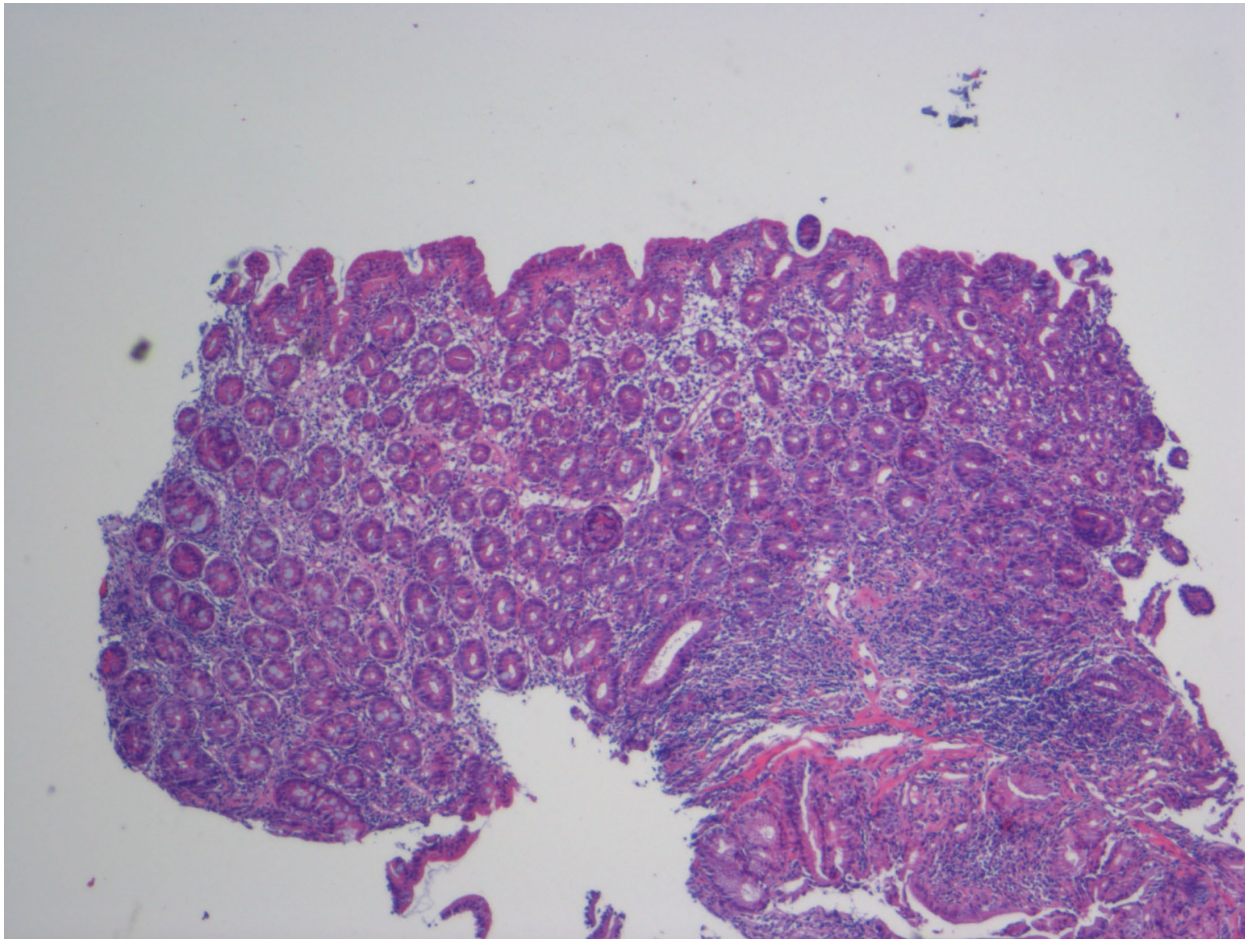


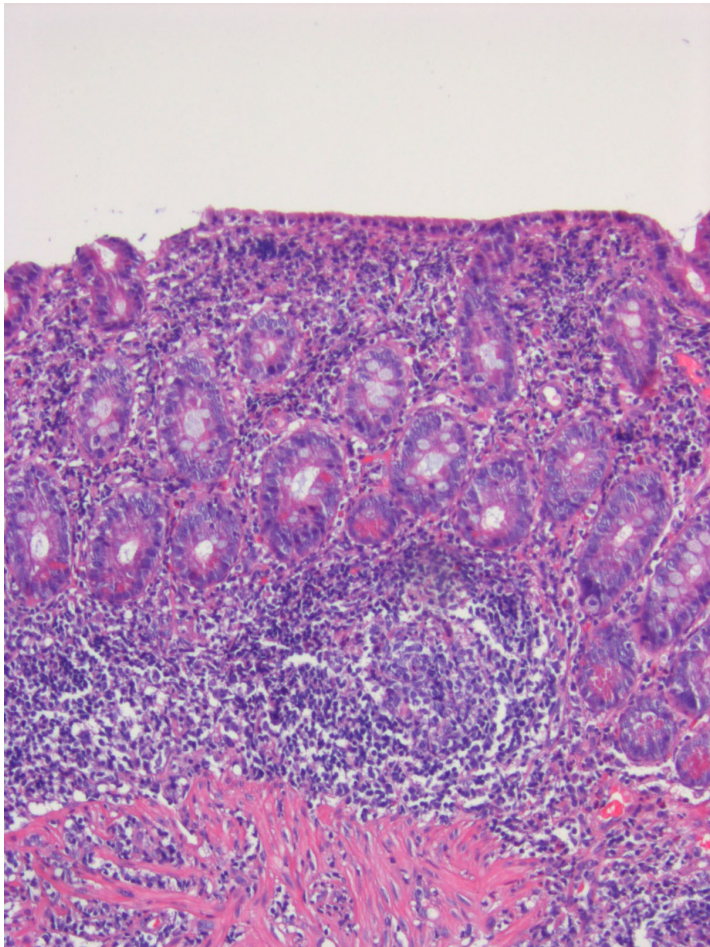
Marsh-Oberhuber Classification of Celiac Disease

Type	Intraepithelial Lymphocytes/ per 100 Epithelial Cells	Crypts	Villi
- Infiltrative type 1	Greater than 40	Normal	Normal
- Hyperplastic type 2	Greater than 40	Hypertrophic	Normal
- Destructive type 3a	Greater than 40	Hypertrophic	Mild atrophy
- Destructive type 3b	Greater than 40	Hypertrophic	Moderate
- Destructive type 3c	Greater than 40	Hypertrophic	Flat
- Hypoplastic type 4	Greater than 40	Atrophic	Flat









Vielen Dank

Version: 2021